



The coordinate of A is -2.
What is the coordinate of B? 0

What is the coordinate of C? 1

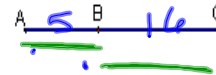
What is the coordinate of D? 2

The length of \overline{BD} is represented as BD .

$BD = \underline{2}$
 $AD = \underline{4}$

$$\begin{array}{l} |2-0| \\ |2-2| \\ |-4| \end{array}$$

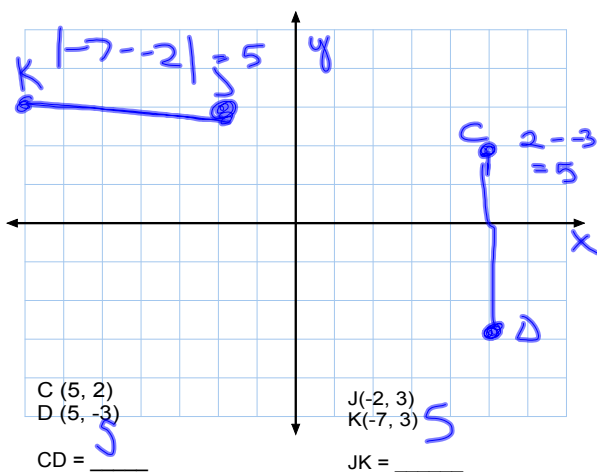
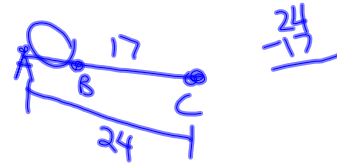
Postulate 5-Segment Addition Postulate



If B is between A and C, then $AB + BC = AC$

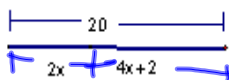
Ex: $AB = 5$, $BC = 16$, $AC = \underline{21}$ $5+16$

Ex: $AC = 24$, $BC = 17$, $AB = \underline{7}$



Congruent-figures that have the same measure

$$\overline{CD} \cong \overline{JK}$$

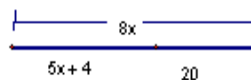


$$2x + 4x + 2 = 20$$

$$6x + 2 = 20$$

$$6x = 18$$

$$x = 3$$

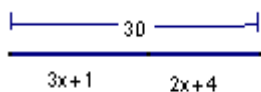


$$5x + 4 + 20 = 8x$$

$$5x + 24 = 8x$$

$$24 = 3x$$

$$8 = x$$



$$3x + 1 + 2x + 4 = 30$$

$$5x + 1 + 4 = 30$$

$$5x + 5 = 30$$

$$5x = 25$$

$$x = 5$$

HW

p31-32

3-5, 13, 14, 17-19, 22-27